



UGP100112

UNITEQ BV

Oude Graaf 18, 6002 NL, Netherlands

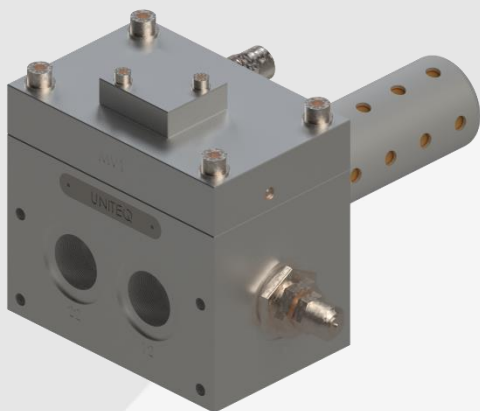
T. +31 495 52 45 65

E. sales@uniteq.nl

Version 2022.v01 EN

Pneumatic manifold G1-2xNC Lock-up

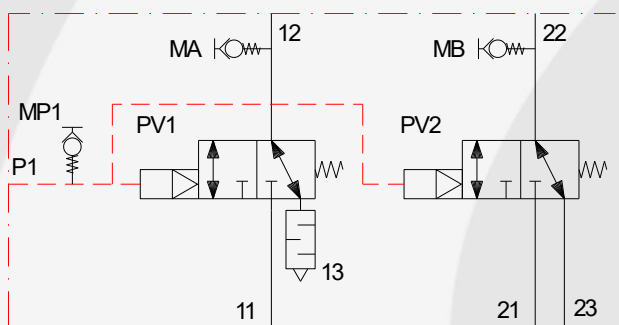
Image



Technical features

- Suitable for double acting (DA) actuator
- Fail safe open/close function by air loss
- Modulating MO or Open/close function
- SIL2 certified according to IEC 61508
- Operation pressure 0...10 bar (0...145psi)
- Operation temperature -25°C -13°F / +70°C +158°F
- Supplied medium air, filtered non-lubricated and dry
- ATEX implementation suitable

Symbol



Technical data

Sizes & selection

Port size)		Max flow		Model	
12/22	11/13/21/23	P1	ltr/min	CV (kg)	
G1	G1	G1/4	8.000	...	5.2 UGP100112

Configuration

Function

MO or O/C

Connections

Port (P1)

external supply connection

Port (12/22)

supply to actuating

Port (11/13/21/23)

supply or release

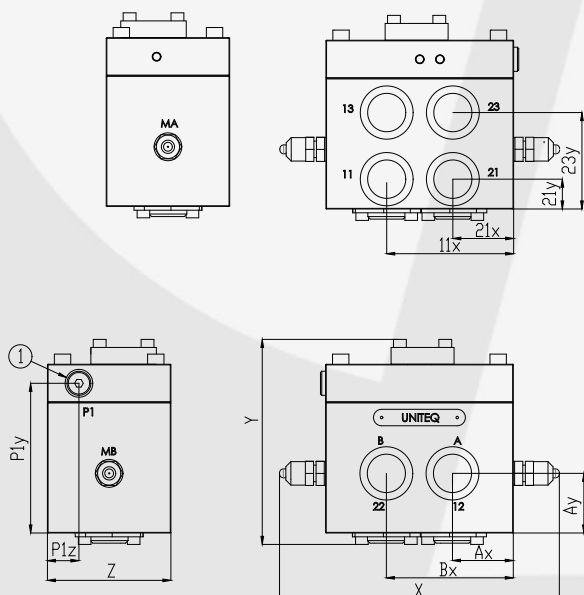
MA/MB/MP1

measurement connection

Order codes:

UGP1000112

Drawing



Sizes

Dimensions

11	12	13	21	22	23	P1
G1	G1	G1	G1	G1	G1	G1/4
MP1	MA	MB	23y	21y	11x	21x
G1/4	G1/4	G1/4	76	24	101	48
Ax	Bx	Ay	P1y	P1z		
24	101	47	118	25		
X	Y	Z				
222	162	98				

Support connection manifold

4 times holes M8, depth 12mm

Material

Housing

Aluminium anodize

Internal parts

Stainless steel, Brass, POM

Seals

NBR / PUR